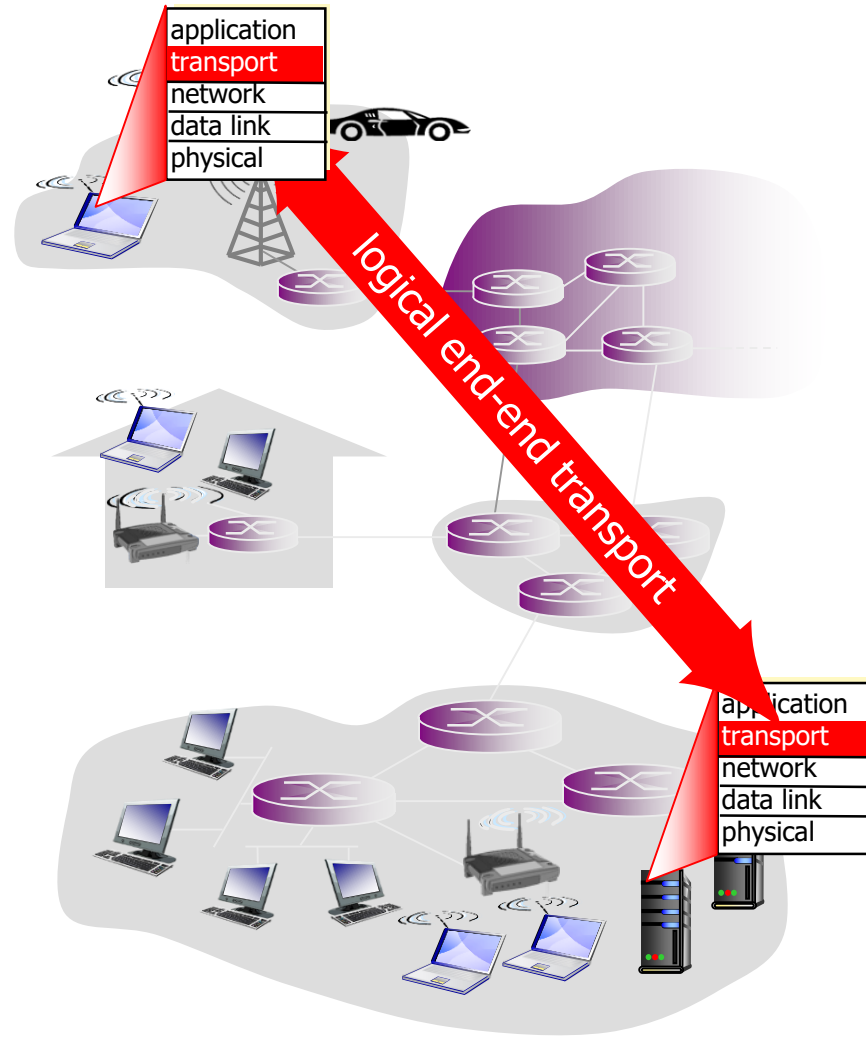


# Transport Layer

Peler Levinsky, Roskilde IT

01.04.2025

# Transport level

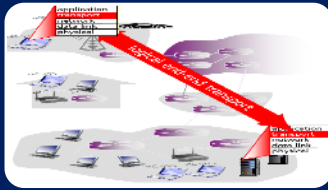


# Protokollstakken



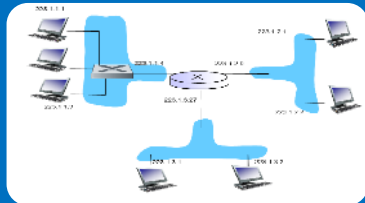
## Application

- Web (HTTP/HTTPS), Email, DNS, DHCP, FTP, ...



## Transport

- TCP - reliable, connection oriented
- UDP - unreliable, connectionless



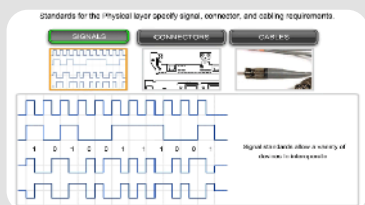
## Network

- IP - IP-packets, unreliable
- IP-addresses



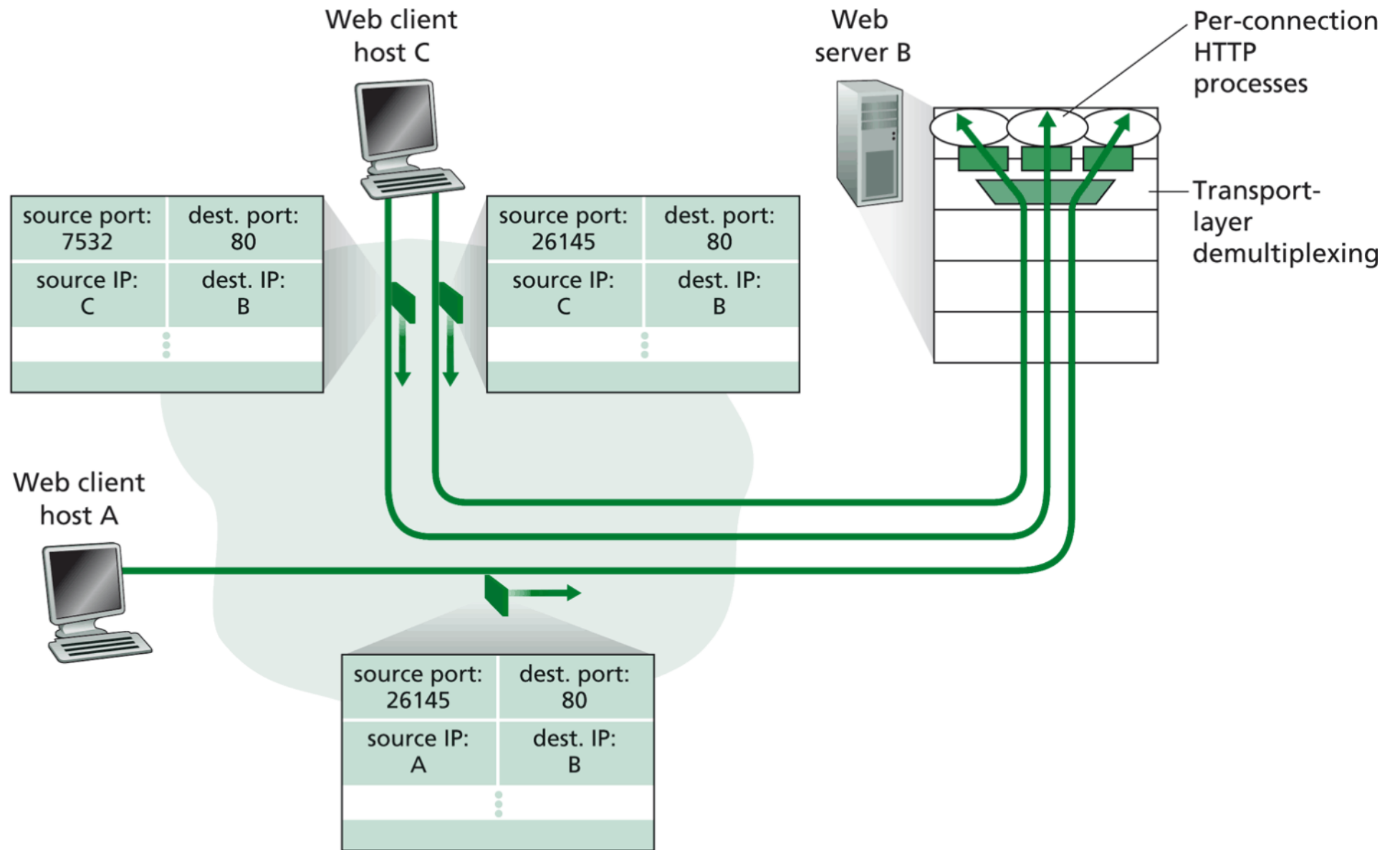
## Datalink

- All kind of access - Wifi, Bluetooth, Ethernet, ...
- MAC-addresses



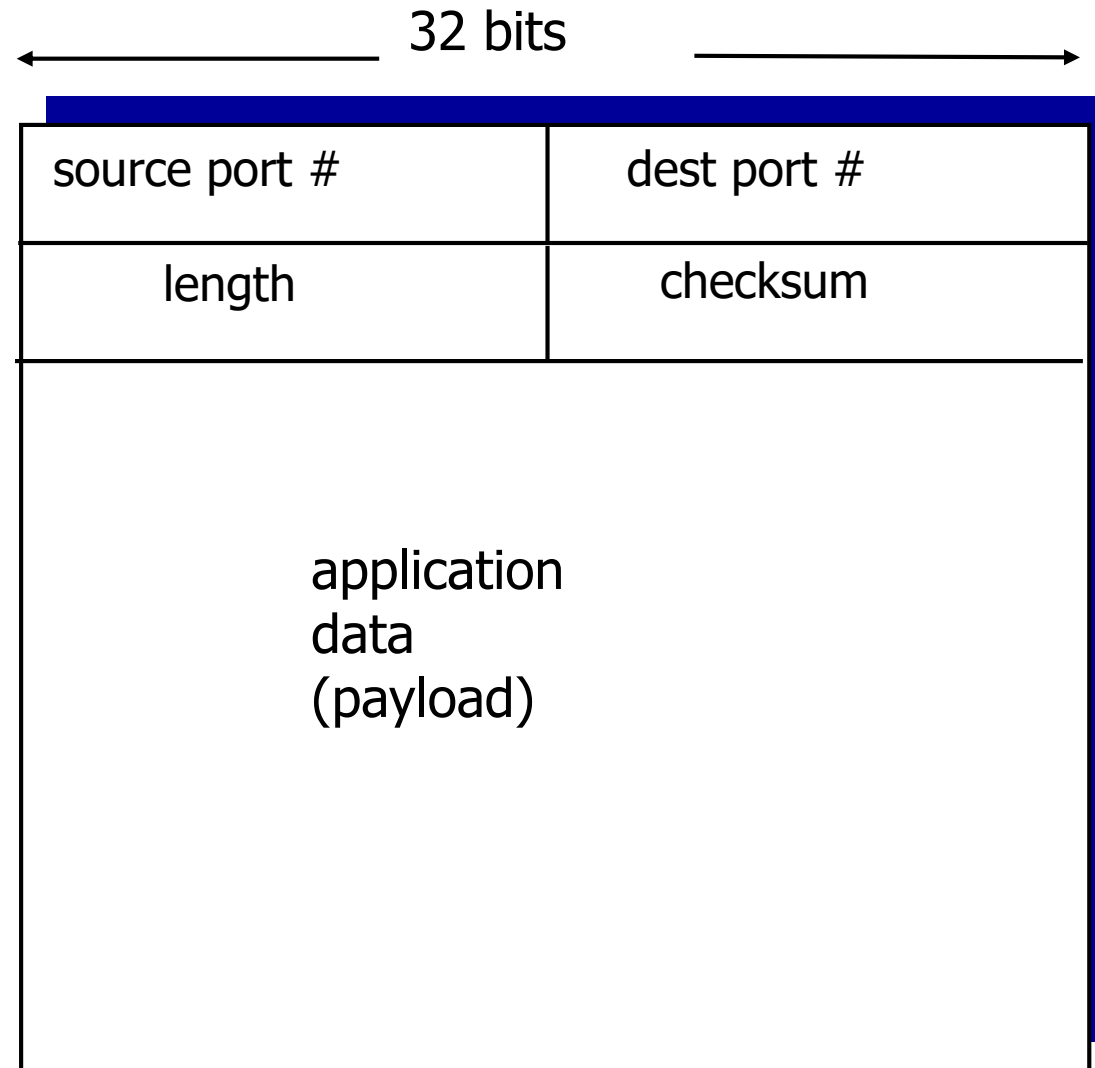
## Physical

- Connectors
- Bit encoding/decoding



**Figure 3.5** ♦ Two clients, using the same destination port number (80) to communicate with the same Web server application

# UDP: segment header



UDP segment format

# Internet checksum: example

example: add two 16-bit integers

	1	1	1	0	0	1	1	0	0	1	1	0	0	1	1	0	
	1	1	0	1	0	1	0	1	0	1	0	1	0	1	0	1	
	<hr/>																
wraparound	1	1	0	1	1	1	0	1	1	1	0	1	1	1	0	1	1
	<hr/>																
sum	1	0	1	1	1	0	1	1	1	0	1	1	1	1	0	0	
checksum	0	1	0	0	0	1	0	0	0	1	0	0	0	0	1	1	

*Note:* when adding numbers, a carryout from the most significant bit needs to be added to the result

# TCP segment structure (TCP Header)

