

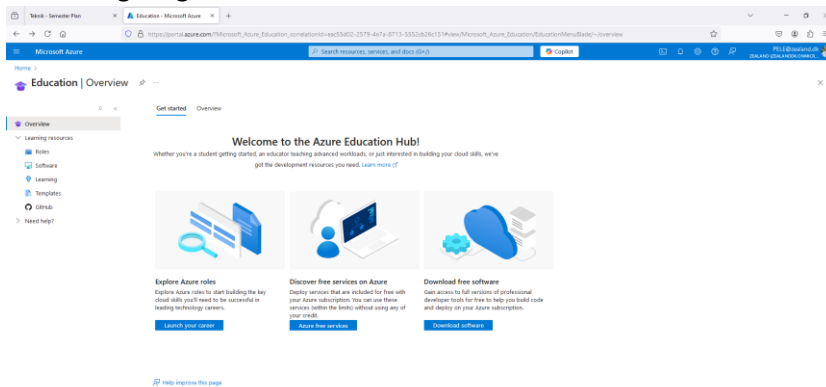
## Opgave Rest service i Azure

Mål at publicere din rest service i Azure (simply.com)

### Opgave 1.1 Opret Azure konto

Du skal logge ind på <http://adt.zealand.dk>

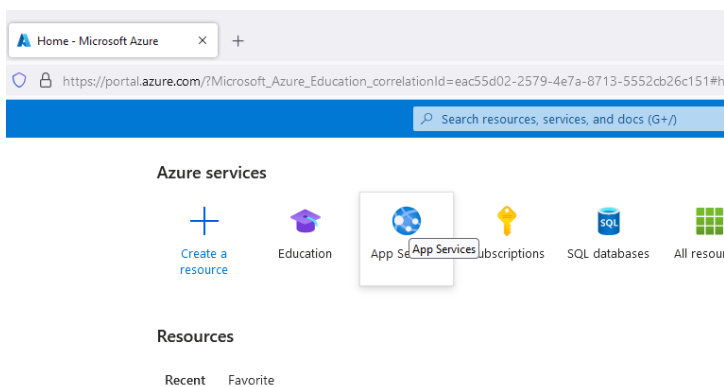
Du får noget lign.



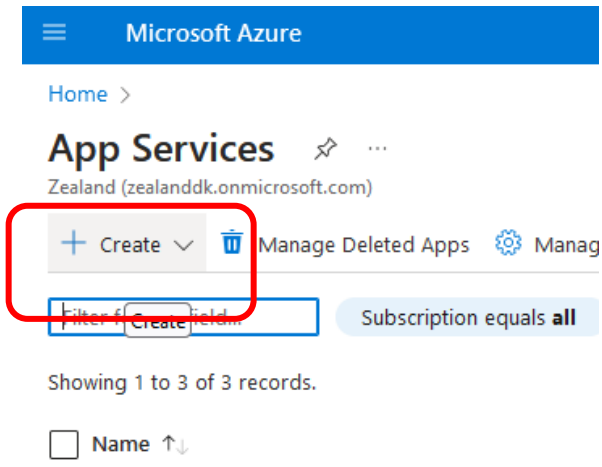
Du skulle gerne have en 'Azure for students' – vælg den.

### Opgave 1.2 Opret et 'site' til din rest service

I 'home' fanen – vælg app-service



## Opret en ny app-service



Microsoft Azure

Home >

# App Services

Zealand (zealanddk.onmicrosoft.com)

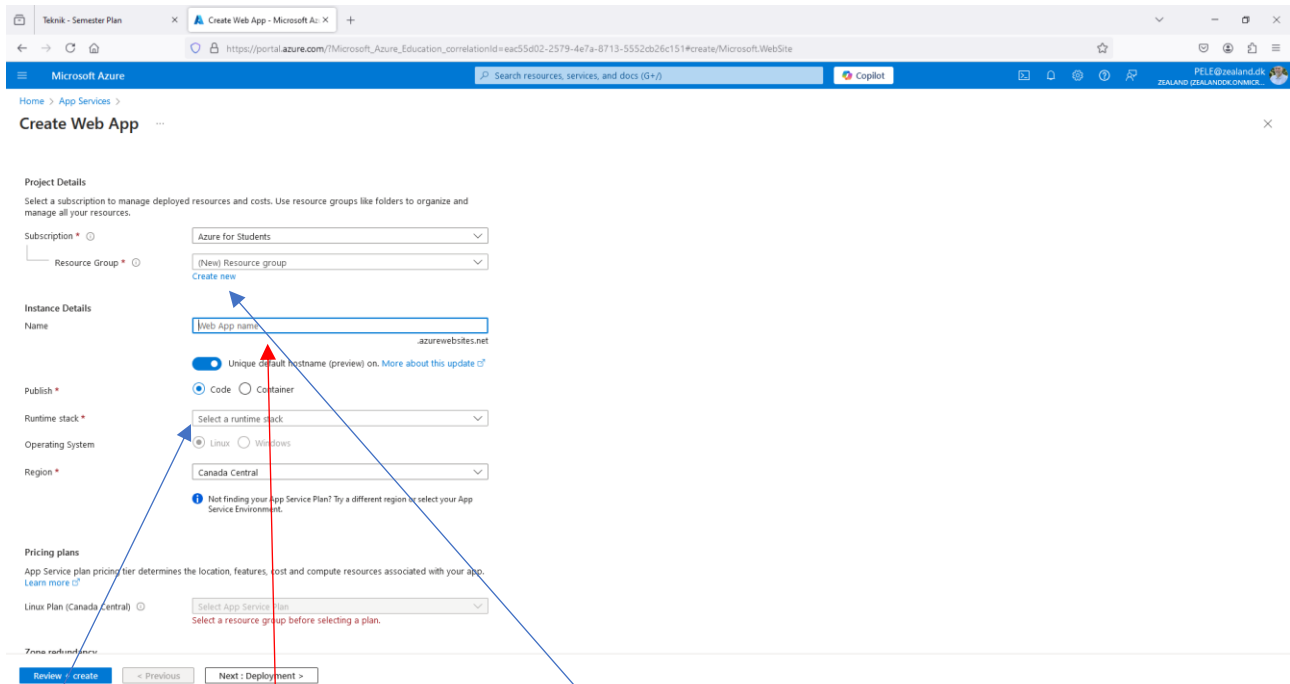
+ Create Manage Deleted Apps Manage

Filter for Create: Subscription equals all

Showing 1 to 3 of 3 records.

Name ↑↓

## Udfyld skemaet:



Teknik - Semester Plan x Create Web App - Microsoft Az: x

https://portal.azure.com/?Microsoft\_Azure\_Education\_correlationId=eac5d02-2579-4e7a-8713-5552cb26c151#create/Microsoft.WebSite

Microsoft Azure Search resources, services, and docs (G+)

Home > App Services >

## Create Web App

Project Details

Select a subscription to manage deployed resources and costs. Use resource groups like folders to organize and manage all your resources.

Subscription \* Azure for Students

Resource Group \* (New) Resource group

Instance Details

Name Web App name azurewebsites.net

Unique default hostname (preview) on. [More about this update](#)

Publish \* Code Container

Runtime stack \* Select a runtime stack

Operating System Linux Windows

Region \* Canada Central

Pricing plans

App Service plan pricing tier determines the location, features, cost and compute resources associated with your app. [Learn more](#)

Linux Plan (Canada Central) Select App Service Plan Select a resource group before selecting a plan.

Review + create < Previous Next : Deployment >

Opret ny resurse gruppe (placer den gerne i nord europa)

Giv din app service et navn

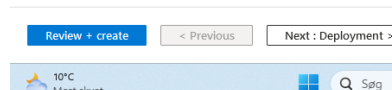
Vælg run-stack (.Net 8)

## Recommended services (preview)

Within a new App Service plan, you can deploy these commonly-used services to be deployed secure-by-default. [Learn More](#)

- Deploy with your app
- Database (optimized bas
  - Azure Cache for Redis (b

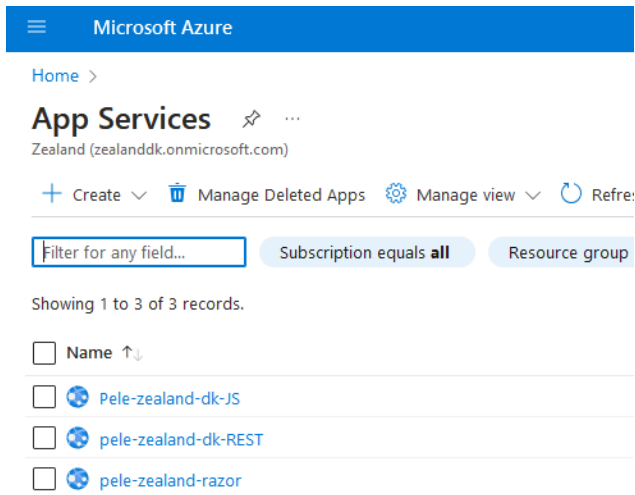
Klik 'review & create'



Review + create < Previous Next : Deployment >

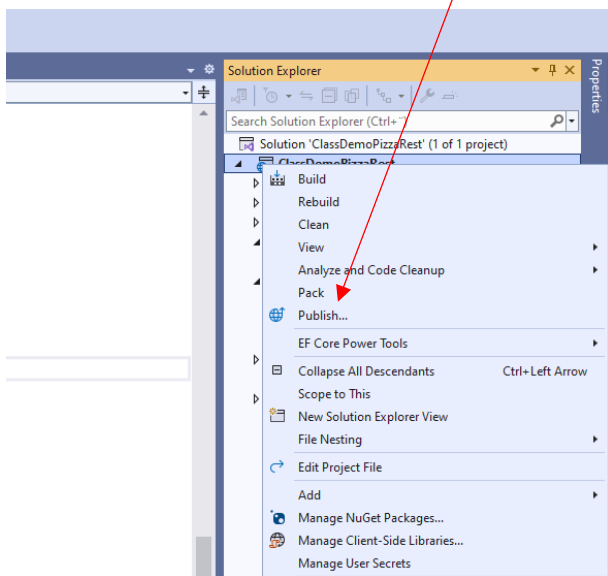
10°C Mest skyet

Jeg har tre app-services jeg benytter:

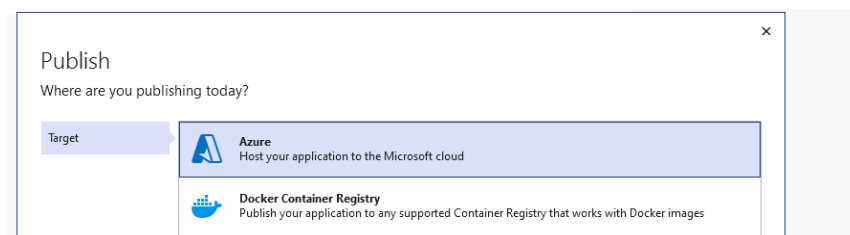


### Opgave 1.3 Publish fra VS2022

Højre klik projektet og vælg publish



Vælg Azure:



## Vælg Azure app service (Windows)

**Publish**

Which Azure service would you like to use to host your application?

Target

Specific target

- Azure Container Apps (Linux)**  
Run scalable containerized applications and microservices on a serverless platform in Azure
- Azure App Service (Windows)**  
Publish your application code to a managed infrastructure that is easy to scale
- Azure App Service (Linux)**  
Publish your application code to a managed infrastructure that is easy to scale

## Vælg den service du vil ligge den i (jeg vælger 'pele-zealand-dk-REST')

**Publish**

Select existing or create a new Azure App Service

Subscription name: Azure for Students

App Service

Deployment type

Search

+ Create new [≡] ↻

- pele-zealand-dk-resourceGrp
  - Pele-zealand-dk-JS
  - pele-zealand-dk-REST
  - pele-zealand-razor

Zealand  
PELE@zealand.dk

## Vælg publish

**Publish**

How would you like to deploy your application?

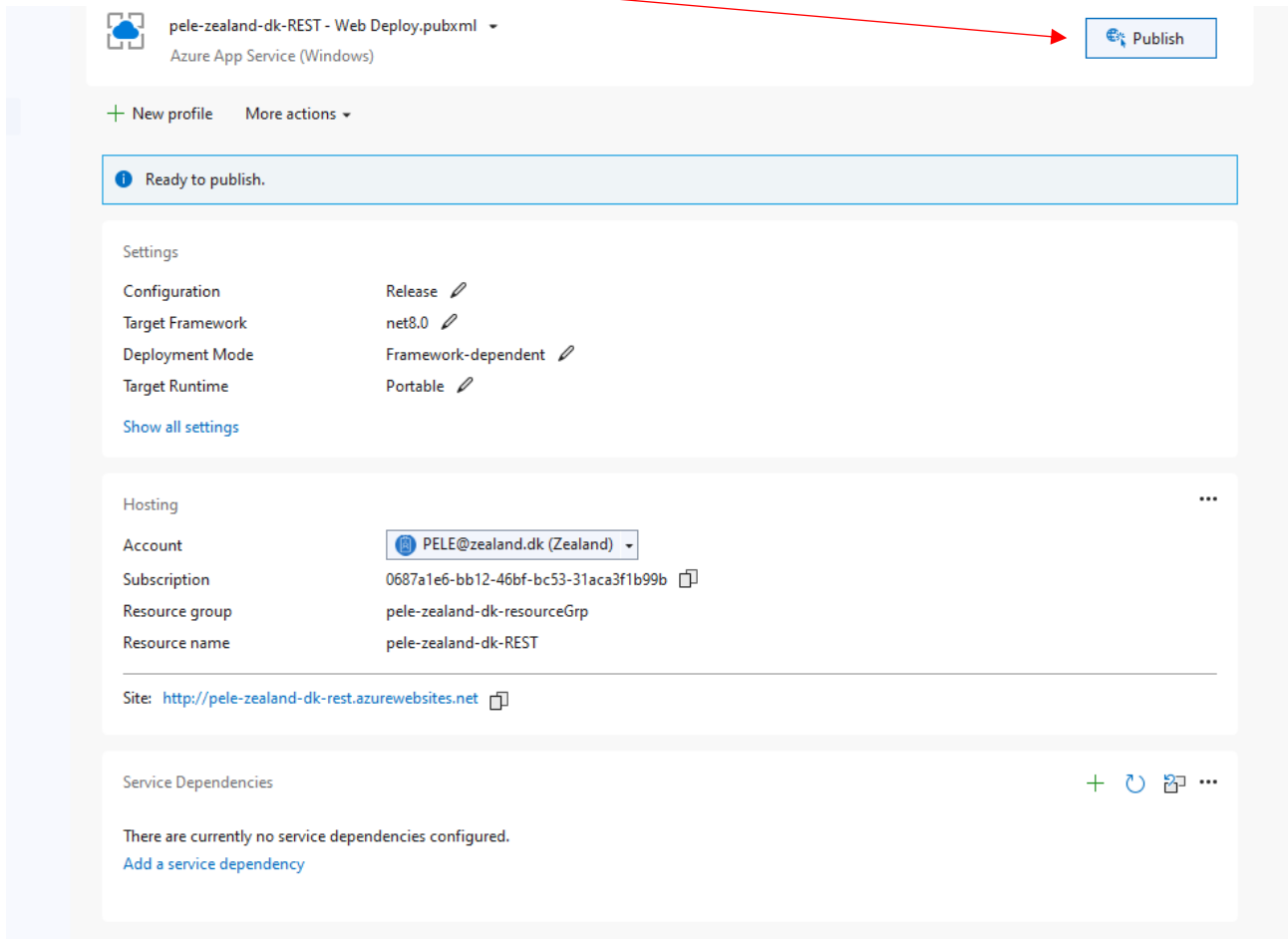
Target

Specific target

App Service

- Publish (generates pubxml file)**  
Deploys application to target on click of Publish button.
- CI/CD using GitHub Actions workflows (generates yml file)**  
Deploys application to target automatically on code push to GitHub repo.

Nu kan du publish'e



pele-zealand-dk-REST - Web Deploy.pubxml  
Azure App Service (Windows)

[Publish](#)

+ New profile More actions

**Ready to publish.**

Settings

Configuration	Release <a href="#">✎</a>
Target Framework	net8.0 <a href="#">✎</a>
Deployment Mode	Framework-dependent <a href="#">✎</a>
Target Runtime	Portable <a href="#">✎</a>

[Show all settings](#)

Hosting ⋮

Account	<a href="#">PELE@zealand.dk (Zealand)</a>
Subscription	0687a1e6-bb12-46bf-bc53-31aca3f1b99b <a href="#">✎</a>
Resource group	pele-zealand-dk-resourceGrp
Resource name	pele-zealand-dk-REST

Site: <http://pele-zealand-dk-rest.azurewebsites.net> [✎](#)

Service Dependencies + ↻ 🗑️ ⋮

There are currently no service dependencies configured.  
[Add a service dependency](#)

**Ekstra Du kan prøve at publishe med ftp til Simply.com**