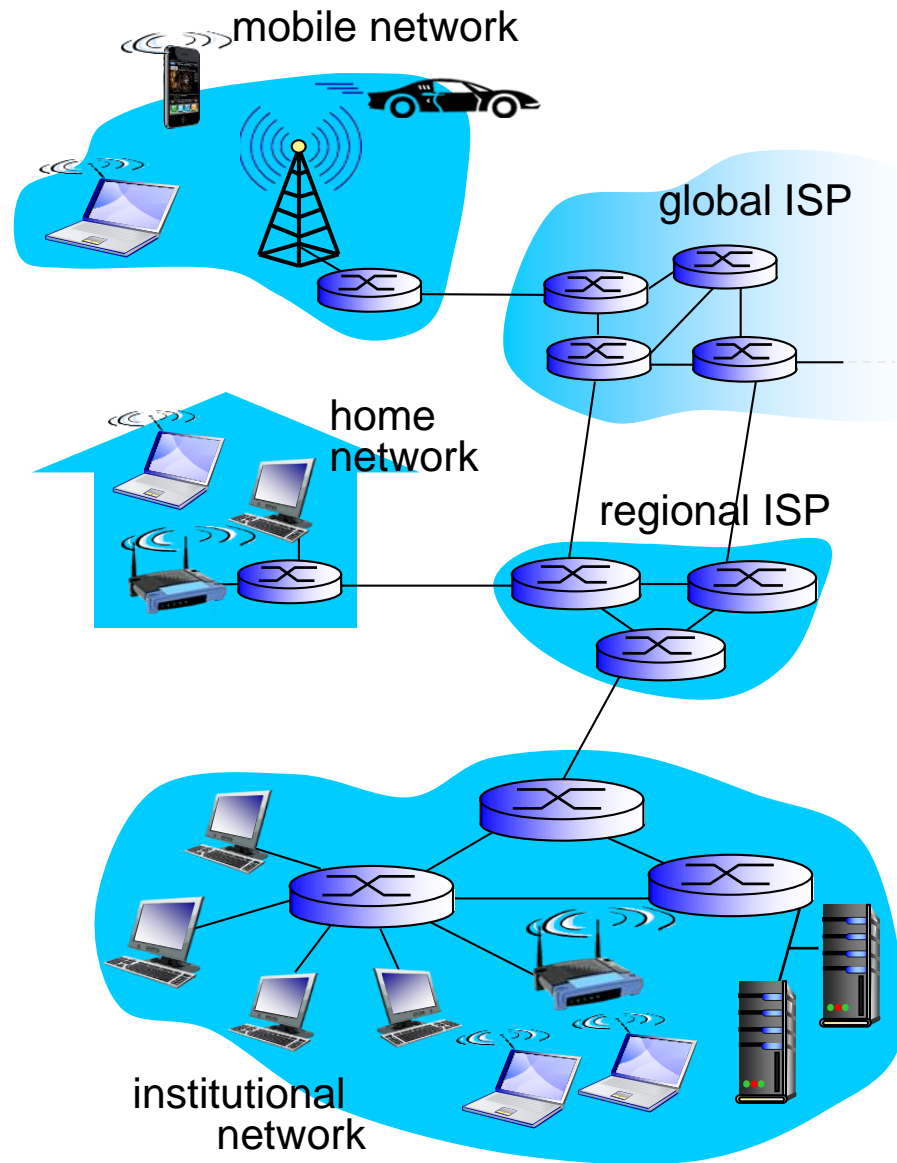


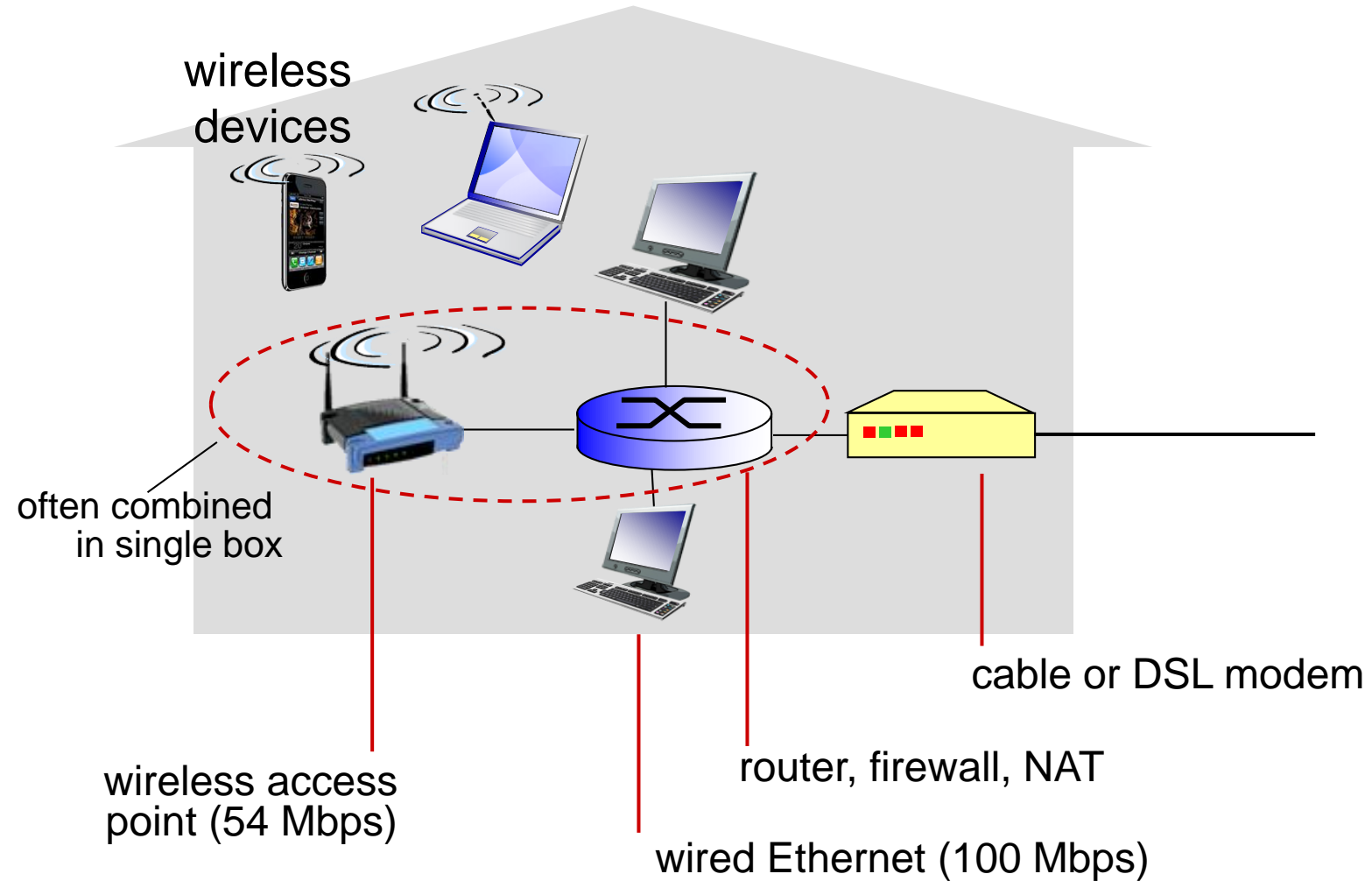
Introduction to Computer Networks

Peter Levinsky, IT Roskilde

23.08.2020



Access net: home network

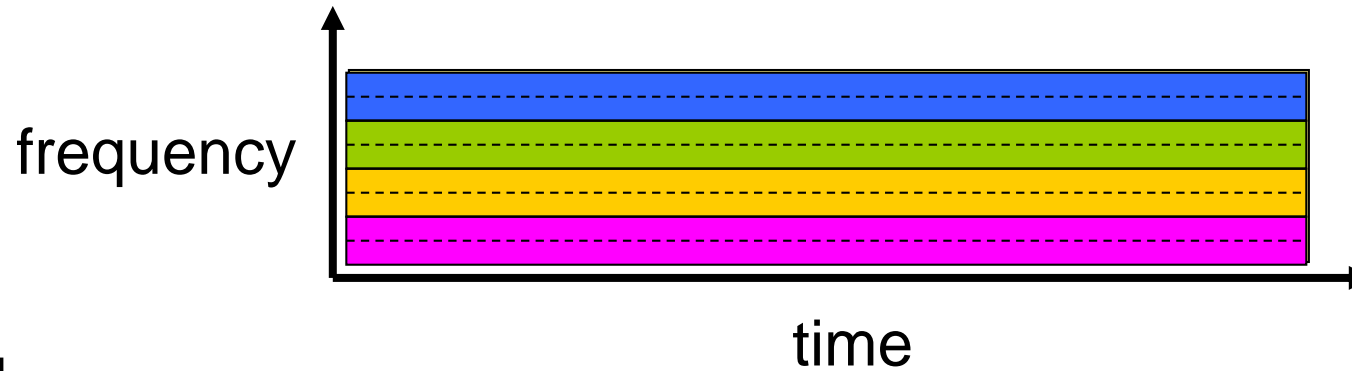


Circuit switching: FDM versus TDM

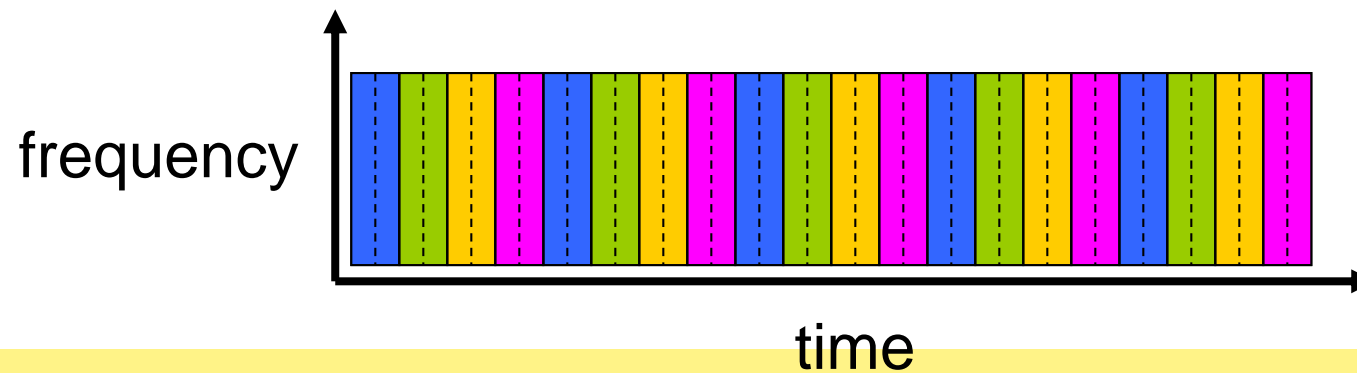
FDM

Example:

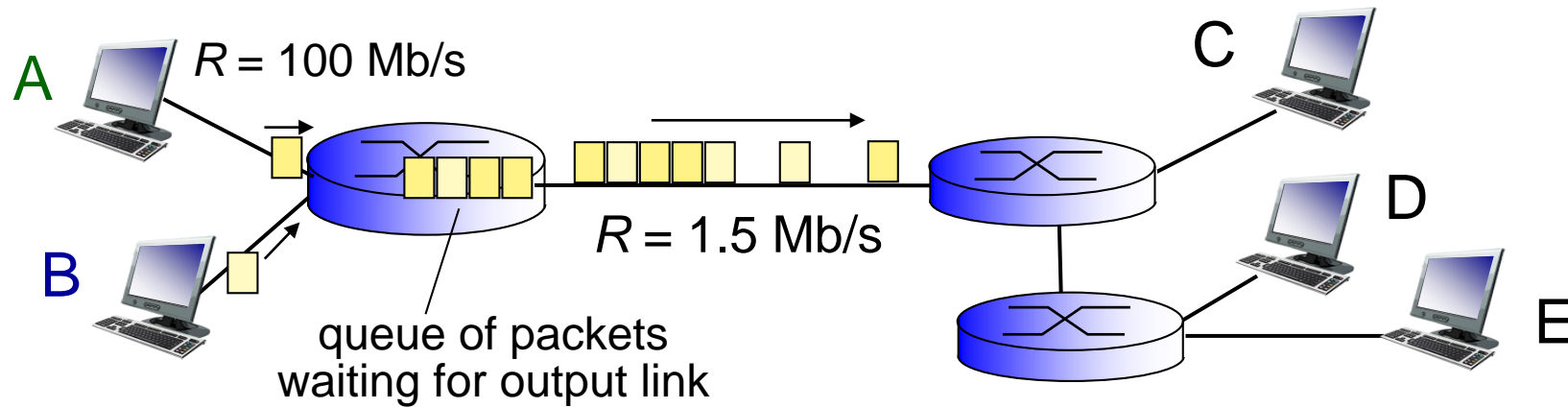
4 users

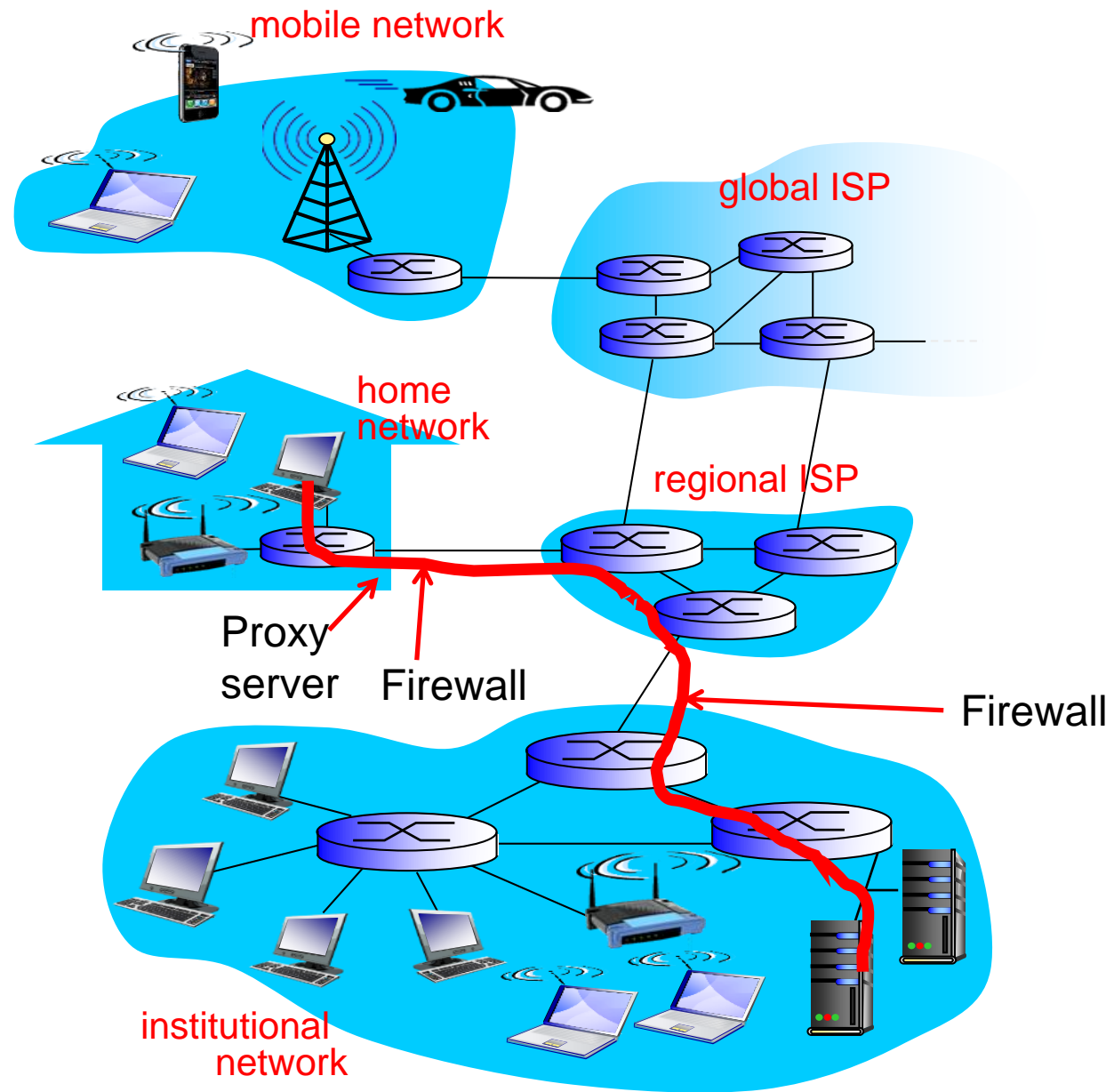


TDM

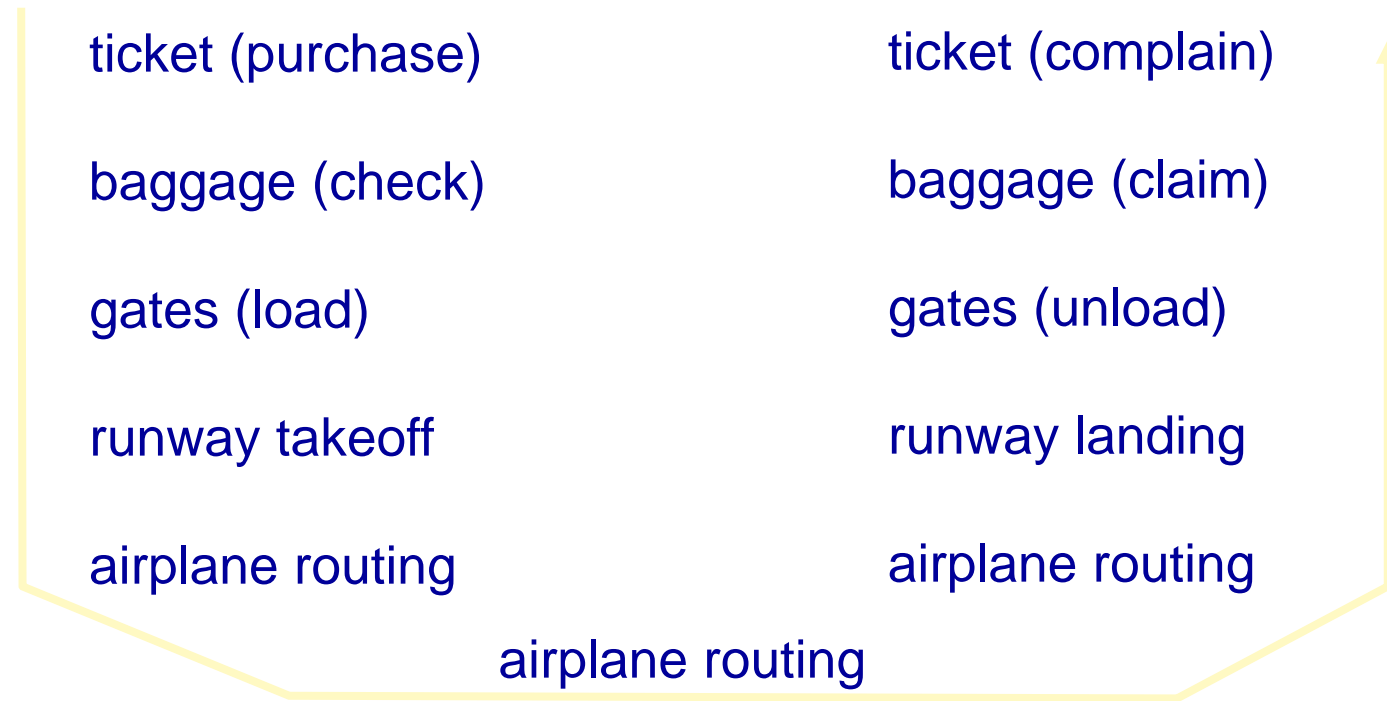


Packet Switching: queueing delay, loss

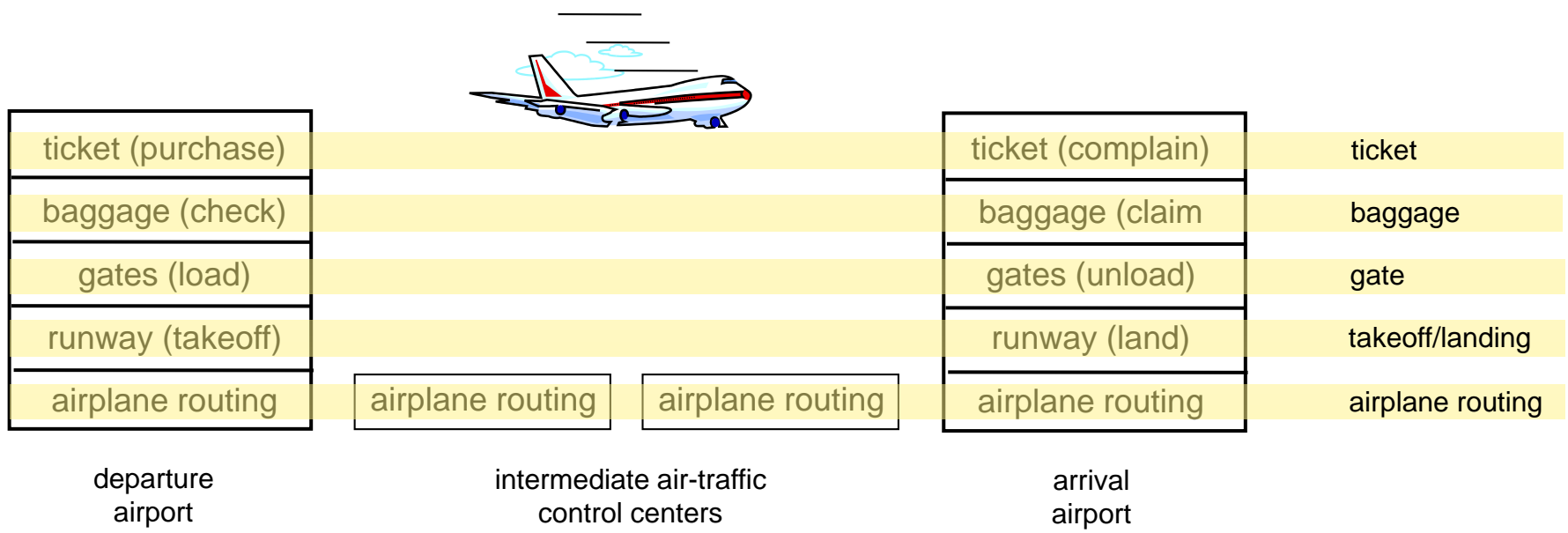




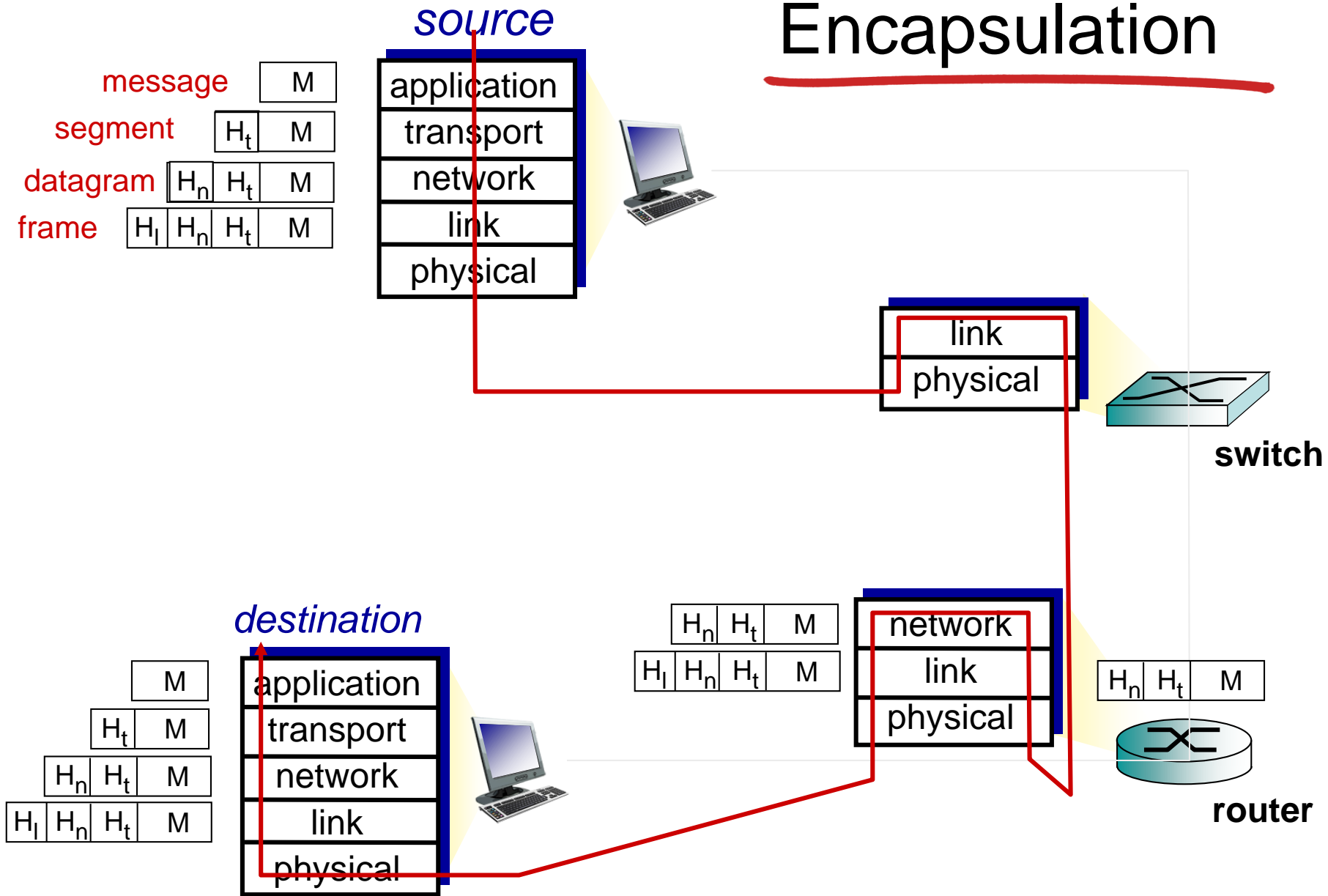
Organization of air travel



Layering of airline functionality

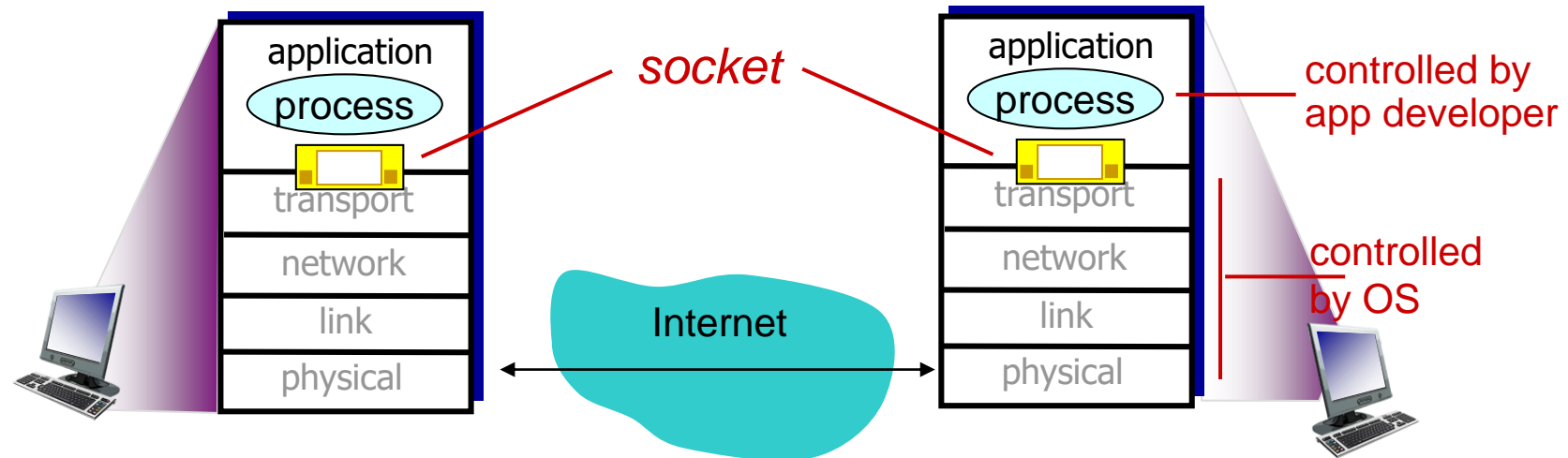


Encapsulation



Sockets

- process sends/receives messages to/from its **socket**
- socket analogous to door
 - sending process shoves message out door
 - sending process relies on transport infrastructure on other side of door to deliver message to socket at receiving process



How to Program – Socket programming

Client

Server

